

National Mission for a Green India



Review Meeting
Ministry of Environment, Forest & Climate Change

Date- 07-06-2019



State- Madhya Pradesh

**K. Raman, IFS, APCCF,
Green India Mission, MP**

GIM in Madhya Pradesh

1. State of MP classified in 8 L1 level landscapes based on 11 agro-climatic zones
2. The operational landscapes cover 122 mili watersheds (L2 level) and 735 micro watersheds(L3 level).
 - (i) Five year perspective plan of state of MP for Rs. 3,157.36 Crore
 - (ii) and APO for 2017-18 for of 396.7528 crores was approved by National Executive Council in its 4th meeting on 03-01-2018.
3. The APO was revised to Rs. 41.8026 Crore for 2018-2019.
4. 33 mili & 79 micro watersheds (11,371 ha) taken for treatment in 2018-19

details available at https://mpforest.gov.in/HO_Outer/Wing_GIM_Detail.aspx

Identified Landscapes









1. Landscape level approach of GIM activities.
 1. L1 landscapes : 8 (based on 11 agro-climatic zones)
 2. L2 landscapes : 122 milli-w/s (18 forest divisions, 15 districts)
 3. L3 landscapes : 735 micro-w/s
 4. Treatment area
 - a) landscape area: 7,35,480 ha
 - b) Forest area: 3,40,000 ha

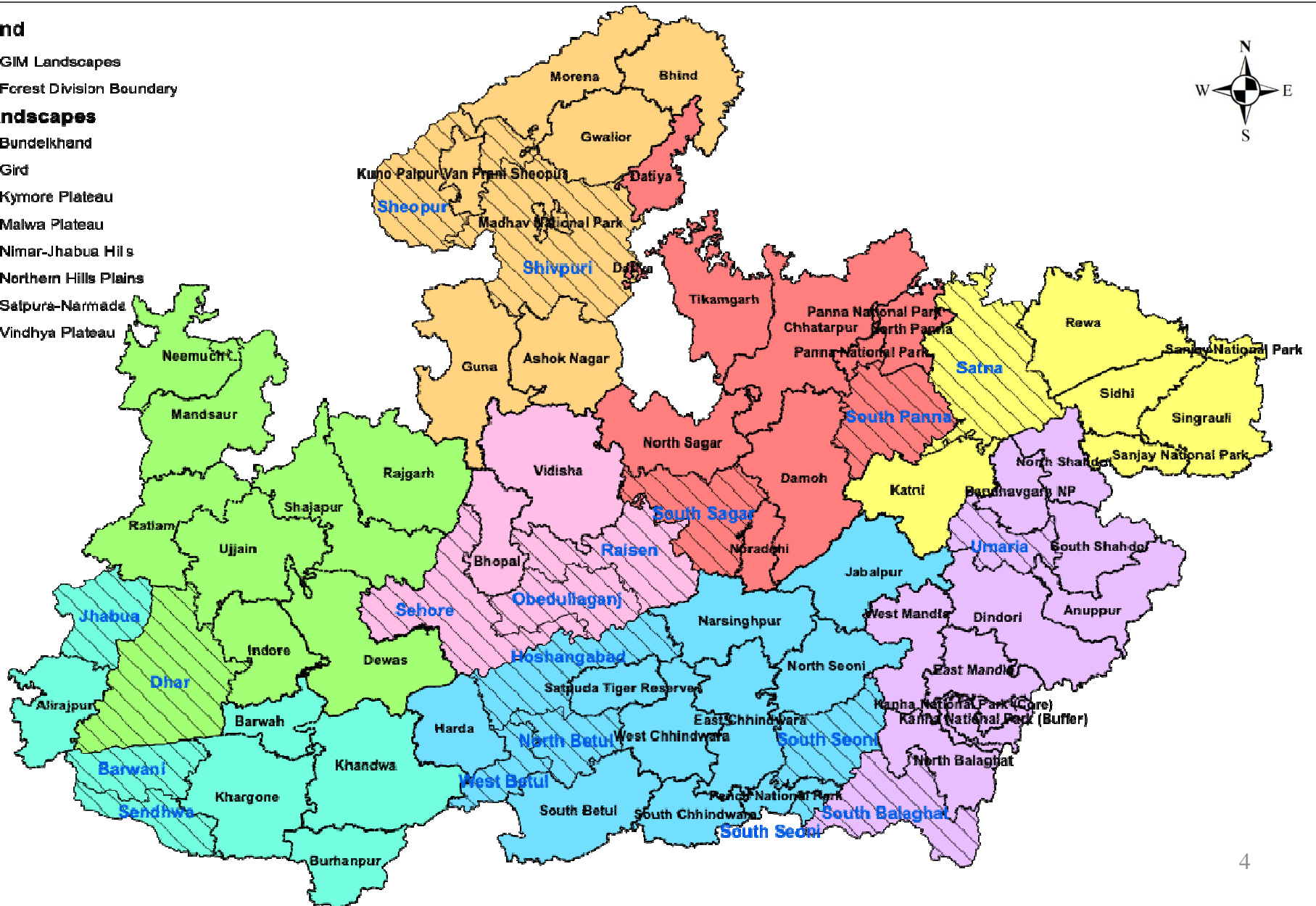
18 Forest Divisions : Selected For Gim

Legend

-  Gim Landscapes
-  Forest Division Boundary

L1 Landscapes

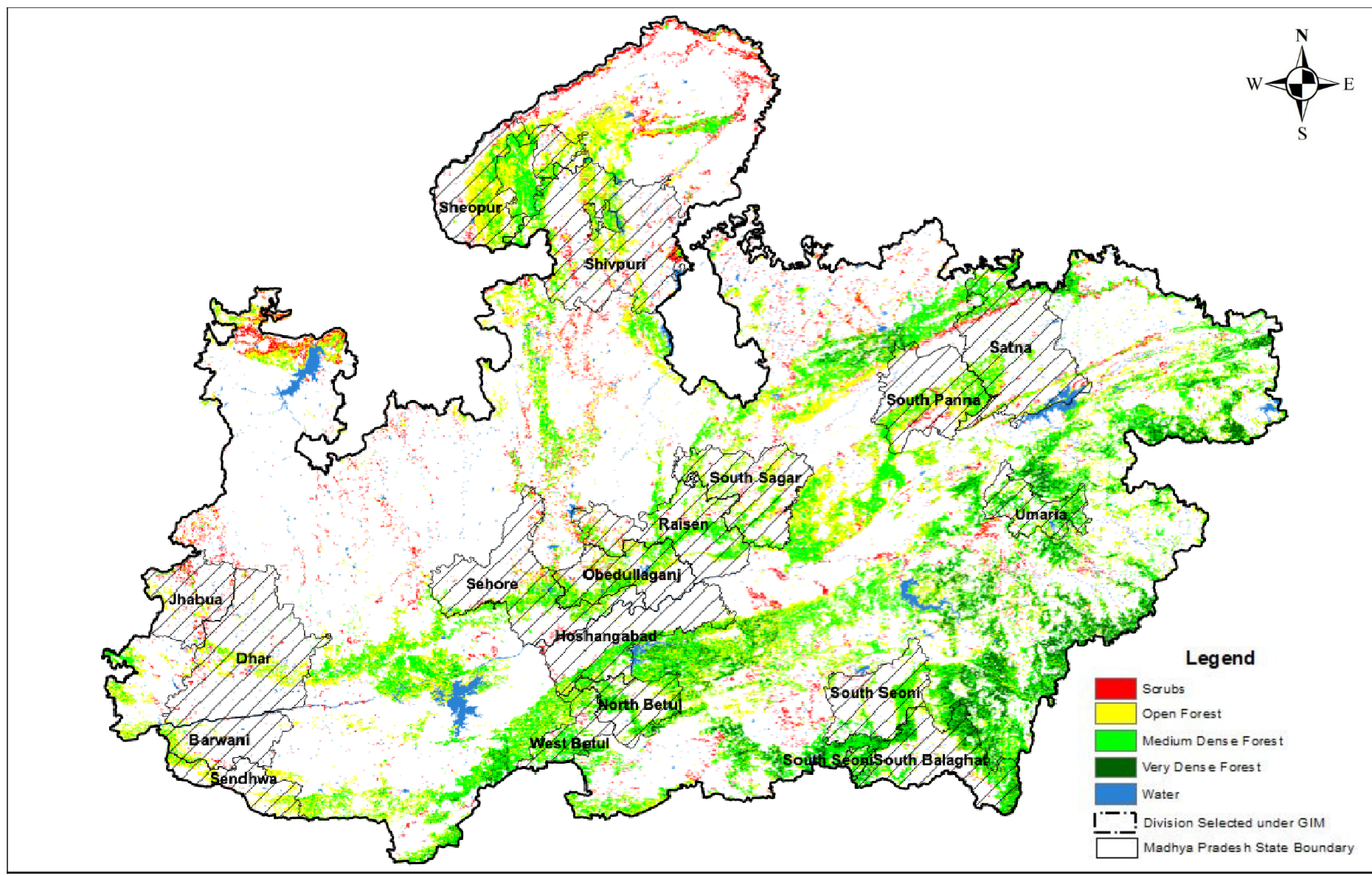
-  Bundelkhand
-  Gird
-  Kymore Plateau
-  Malwa Plateau
-  Nimar-Jhabua Hills
-  Northern Hills Plains
-  Satpura-Narmada
-  Vindhya Plateau



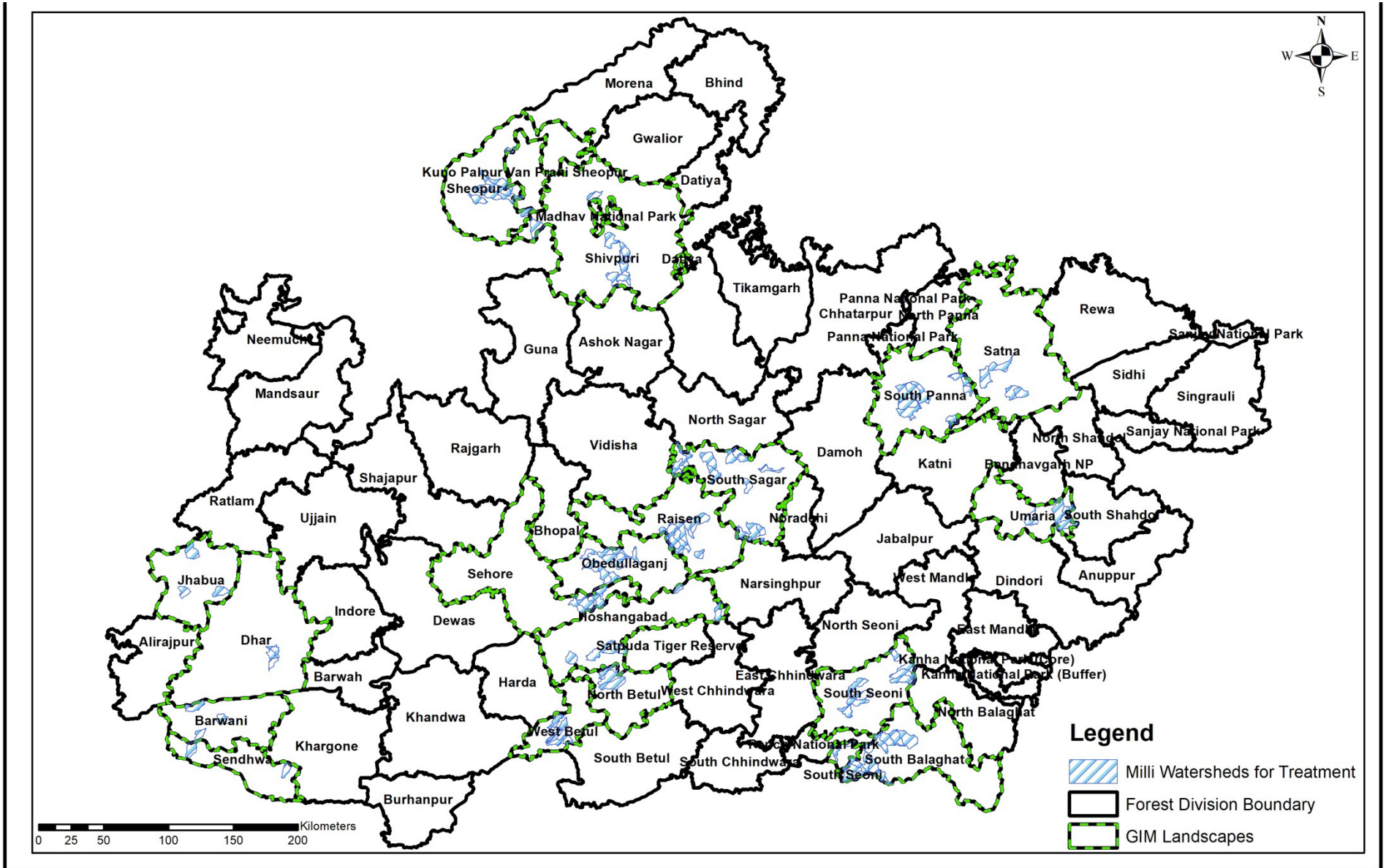
Divisions Selected For Treatment Green India Mission

FOREST COVER MAP OF MADHYA PRADESH

Source: Forest Cover Map, FSI, 2013



Landscapes Selected For Treatment Green India Mission



Landscapes of Green India Mission Madhya Pradesh

L1 Landscape	Name	L2 Divisions	Mili watersheds (L2 level)	micro watersheds (L3 level)	Area (Ha)
Landscape (i)	Kymore plateau	Satna	4	28	33,343.09
Landscape (ii)	Northern Hills Plains	Umaria	4	24	31,919.78
		S. Balaghat	12	71	74,703.37
Landscape (iii)	Satpura-Narmada	Hoshangabad	5	30	33,355.73
		South Seoni	11	67	75,028.40
		North Betul	4	20	27,860.36
		W. Betul	8	24	29,083.20
Landscape (iv)	Vindhya Plateau	Raisen	10	67	51,000.26
		Obedullaganj	10	57	51,350.07
		Sehore	5	28	27,224.82
Landscape (v)	Malwa Plateau	Dhar	3	18	10,794.95
Landscape (vi)	Nimar-Jhabua Hills	Jhabua	3	20	20,596.94
		Badwani	3	21	18,218.11
		Sendhwa	2	11	11,708.77
Landscape (vii)	Bundelkhand	South Sagar	13	79	71,378.77
		S. Panna	9	64	68,068.78
Landscape (viii)	Gird	Sheopur	8	48	50,343.13
		Shivpuri	8	58	49,501.00
Total			122	735	735,479.53

Forest Division wise revised APO 2018-19

L1 Landscape	Name	L2 Divisions selected	Target	
			Physical (Ha)	Financial (Rs. In Lakh)
Landscape (i)	Kymore plateau	Satna	611	229.69
Landscape (ii)	Northern Hills Plains	Umaria	646	218.47
		South Balaghat	1,077	323.74
Landscape (iii)	Satpura- Narmada	Hoshangabad	661	181.81
		South Seoni	904	344.66
		North Betul	426	119.97
		West Betul	592	133.95
Landscape (iv)	Vindhya Plateau	Raisen	879	270.87
		Obedullaganj	1,084	311.48
		Sehore	365	98.81
Landscape (v)	Malwa Plateau	Dhar	223	95.37
Landscape (vi)	Nimar- Jhabua Hills	Jhabua	193	108.18
		Barwani	224	115.26
		Sendhwa	200	83.03
Landscape (vii)	Bundelkhand	South Sagar	855	332.12
		South Panna	977	408.15
Landscape (viii)	Gird	Sheopur	1,134	456.85
		Shivpuri	861	347.31
Total		18	11,912	4,179.72

Sub Mission wise Physical & Financial Progress 2018-19

S.No	Sub Mission	Target		Achieved	
		Phy(Ha.)	Fin. (Rs. Lakh)	Phy (Ha.)	Fin. (Rs. Lakh)
1	Sub mission 1(a) Restoration of moderately dense forests	4936	781.81	4,739	502.28
2	Sub mission 1(b)- Types i, ii & iii, Eco-restoration of degraded forests	3373	891.69	2,803	566.72
3	Sub mission 1(c), Grassland restoration	862	318.74	859	197.63
4	Sub mission 2 (b) & (C) Scrubland & abandoned Mining areas	23	24.82	8	6.70
5	Sub mission 3 (a), Urban & Peri-Urban plantation	166	174.85	103	50.49
6	Sub mission 4 (a,b,c), Agro & Social Forestry	2538	784.91	1,237	185.40
7	Sub mission 5, wetland restoration	16	9.82	4	2.63
	Total (Component A)	11,915	3096.08	9,753	1516.25
	Total (Component B)	-	1083.63		109.78
	Grand Total (A+B)	11,915	4179.71	9753	1626.03

Source: Progress Report 2018-19 M.P. Forest Department- Annexure:V submitted to MoEF&CC, GOI April 2019

Financial Progress- Budget Utilization status FY 18-19

S. No	Division	Amount sanctioned (in Rs. Lakhs)	Actual expenditure (in Rs. Lakhs)	Balance amount (in Rs. Lakhs)
1	Satna	229.69	108.55	121.14
2	Umaria	218.47	81.24	137.23
3	South Balaghat	323.74	120.44	203.30
4	Hoshangabad	181.81	53.87	127.94
5	South Seoni	344.66	128.19	216.47
6	North Betul	119.97	25.31	94.66
7	West Betul	133.95	25.42	108.53
8	Raisen	270.87	100.74	170.13
9	Obedullaganj	311.48	120.93	190.55
10	Sehore	98.81	36.74	62.07
11	Dhar	95.37	45.03	50.34
12	Jhabua	108.18	27.90	80.28
13	Badwani	115.26	48.23	67.03
14	Sendhwa	83.03	45.20	37.83
15	South Sagar	332.12	150.53	181.59
16	South Panna	408.15	151.80	256.35
17	Sheopur	456.85	196.93	259.92
18	Shivpuri	347.31	129.19	218.12
	Total	4,179.72	1,596.24	2,583.48

Brief Progress

- ❖ MOEFF &CC revised the APO of MP 2018-19 to 11914 ha, 3317 households with a revised outlay of Rs 41.8026 crores
- ❖ Revision of APO amounted to a revised target of 10.54% of the plan approved by the National Executive Council.
- ❖ Only 10.5% of the proposed landscapes and submissions could be taken up for treatment during the year 2018-19.
- ❖ 30 L2 level landscapes taken up for treatment in 18 forest divisions of GIM MP
- ❖ First instalment of Rs.17.60 cr. made available to the State Government. amount used in partial treatment of 11,915 ha of the landscapes.
- ❖ Provisional U.C. of Rs.8.43 cr. Submitted in Jan.19 & second U.C. of Rs. 14.42 cr. submitted in March 19.
- ❖ MoEF&CC on 30/3/19 released 2nd instalment of Rs. 13.93 cr. This amount could not be transferred to SFDA account of state government.
- ❖ As required by MoEF&CC for revalidation of 2nd instalment, U.C., non-embezzlement/non-diversion certificates vide this office letter dt. 27/04/2019 submitted.

Brief Progress continued....

❖ The Progress includes

- (i) site preparations,
- (ii) fencing of the area
- (iii) digging of pits,
- (iv) removal of invasive species,
- (v) preparation of plants,
- (vi) preparation of inspection paths,
- (vii) soil and water conservation measures,
- (viii) various livelihood oriented activities
- (ix) research.

progress report submitted to MoEF&CC is available online at https://mpforest.gov.in/img/files/GIM_APO_Progress_Report.pdf

❖ Divisions preparing Micro plans of villages covered GIM.

❖ Component B- Divisions are taking activities like exposure visits, documentation of local flora & fauna, soil testing, awareness campaigns etc.

Brief Progress continued...

- ❖ measurement of carbon : officers ranging from APCCFs, CCFs, DCFs, ACFs and FROs were exposed to a three-day training organized by FSI, Dehradun during 30th January to 1st February 2019. ICFRE is finalizing the methodology, sampling intensity.
- ❖ Coordination with line departments for convergence being carried out by respective divisions.
- ❖ Listing of livelihood interventions and beneficiaries screening with support of SRLM in each division carried out.
- ❖ Cross Cutting Interventions, the Divisions have listed activities for promoting alternative fuel energy and screening of beneficiaries.

Knowledge Partnership- IIFM, Bhopal

Title of Study : Developing a framework for Identification and Estimation for Hydrological Services of Forest Landscape

Study Objectives;

- (1) To identify the attributes and parameters that affect watershed hydrology from the forest and their measurements/documentation
 - (2) To Develop MRV indicators (Monitoring Reporting and Verification) to assess quality of water from the forest catchment/watershed
 - (3) To Develop a framework for payment for Hydrological Services of Forest Landscape
2. Proposed study period is 18 (eighteen) months and total budget 20.00 lakhs
 3. The study will be carried out by Centre for Forest Hydrology, IIFM-Bhopal

Progress Status on Hydrology Research :

- ❖ MoU Signed on 8th March 2019 between IIFM and GIM, MP
- ❖ Initial Instalment 10% has been released for the amount of 1.80 lakh
- ❖ Initial Study area has been selected; i.e.,
 - ✓ Satna
 - ✓ Sehore
 - ✓ Dhar
 - ✓ Balaghat
- ❖ Inception report is submitted by IIFM Bhopal on, May 2019 after field visits at the study locations.
- ❖ Payment of 2nd Instalment as per MoU to IIFM, after release of 2nd instalment by MoEF&CC

Knowledge Partnership with PPSU, Bhopal

Proposed activities

1. Compilation of L2 level landscape Information for 30 landscapes
2. Socio Economic Survey and Training of the project areas in three forest divisions of ESIP

Total proposal Rs. 66.00 Lakh

- ❖ Socio Economic profiling is completed by PPSU, M.P. Govt. for selected Green India Mission Forest Division

Capacity Building- Training on Carbon Measurement Techniques, FSI, Dehradun

During 30th January to 1st February 2019

Total number (29) of participants from M.P. Forest Dept.

Sr. No.	Designation	Number of participants
1.	Addl. PCCF	3
2.	CCF	3
3.	DFO's	2
4.	SDO's	7
5.	RO's	14



Livelihood intervention details

livelihood interventions adopted in the Green India Mission Landscape

- **Mushroom cultivation:** 98 women in Hoshangabad division trained. The SHGs have successfully established 98 mushroom units.
- **Sanitary Napkin Unit:** 12 women are trained to make sanitary napkins in North Betul division
- **Honey collection:** 182 beneficiaries in South Panna, Hoshangabad and Sheopur division are trained for bee keeping and are collecting honey.
- **Vermi compost tank :** 294 tanks constructed in Hoshangabad, South Balaghat, North Betul and Satna division
- **Biogas digester:** 9 units are setup in South Sagar division
- In Satna division 35 young women are trained in agarbatti making. They are successfully making 6-7 quintal agarbatti in a day.
 - 60 villagers are given livelihood opportunity of making bamboo fencing in Satna division

Skill Development Training details

- **Tailoring training:** 730 women are given stitching training in South Balaghat, Jhabua, South Panna, Umaria, Dhar, Hoshangabad, North Betul, Raisen, Sehore, South Sagar and South Seoni division
- **Skill development training:** 293 youth in Barwani, Hoshangabad, Sendhwa, North Betul and West Betul division are given skill development training such as computer training, electrician, driving, etc.

Initiatives

Villagers of Sulibadi in Dhar Range, Dhar division

- The initiative helped the 100 farmers to find jobs in the plantation site where nearly 400 Moringa sticks (drum sticks) were planted.



Satna division

Treated bamboo an alternate to cement poles

For each pole, the farmer is paid Rs. 23.33/-



Mahua tree treatment increased production of Mahua in **Satna division**

- Mahua tree was treated by a solution of Sodium nitrate (250 gms), Potassium chloride (250 gms), Murate of Potash (250 gms) and bucket full water.



Gadoth village in **Satna division**

- A self help group of young 35 women were trained and they agreed to start the unit. The unit successfully produces 6-7 quintals a day and markets it in local market at a rate of Rs. 60 /- per kg.



Sanitary Napkin Unit: Bhaura Dhana Betul



Bamboo fencing is providing livelihood to the villagers in **Satna division.**

- Labour from GIM landscape are engaged in making bamboo fencing and are paid Rs. 300/- per bamboo fence per day.
- Total 1200 bamboo fence are made till date that will be used for fencing the plantation sites.



Honey collectors find a sustainable source of income in **Sheopur division**

- A honey purification unit in Sheopur division is established with an objective to purify the honey collected by the tribal groups and provide them with a sustainable source of income.



Vermi compost in Hoshangabad division

- ❖ The vermi compost produced by the villagers will be used in their respective fields and it will also be procured by the forest department. 101 vermi compost tank are constructed in the division



Mushroom cultivation in Hoshangabad division

- The interest females of the project area visited mushroom units established by Pradan in the Hoshangabad division.
- 98 women were trained on mushroom cultivation and 98 mushroom units in are established in the project area.



Bee keeping in Lalpani village in Hoshangabad

- Bee keeping training was organized in Lalpani village of Hoshangabad division.
- 38 villagers were given bee keeping training in the division. These villagers will be facilitated by the division in establishing the bee keeping units.



Bio-digester in South Sagar division

- 9 Bio digester units are successfully setup in South Sagar division
- Vermi compost tank is constructed with the bio digester



A ray of hope for the unemployed youth of Barwani division

- Total of 60 youth were selected for undergoing skill development training such as of security guard, machine operator and electrician.
- A total of 38 youth are placed in Rural Skill Development Institution, Bhopal with a salary of Rs. 8,000/- to Rs. 12,000/- per month.



Skill development training to women in Raisen division

- ❖ After the need assessment stitching training was given to 106 women from Panjhirpa, Bhavargarh, Suagarh and Kitora villages.



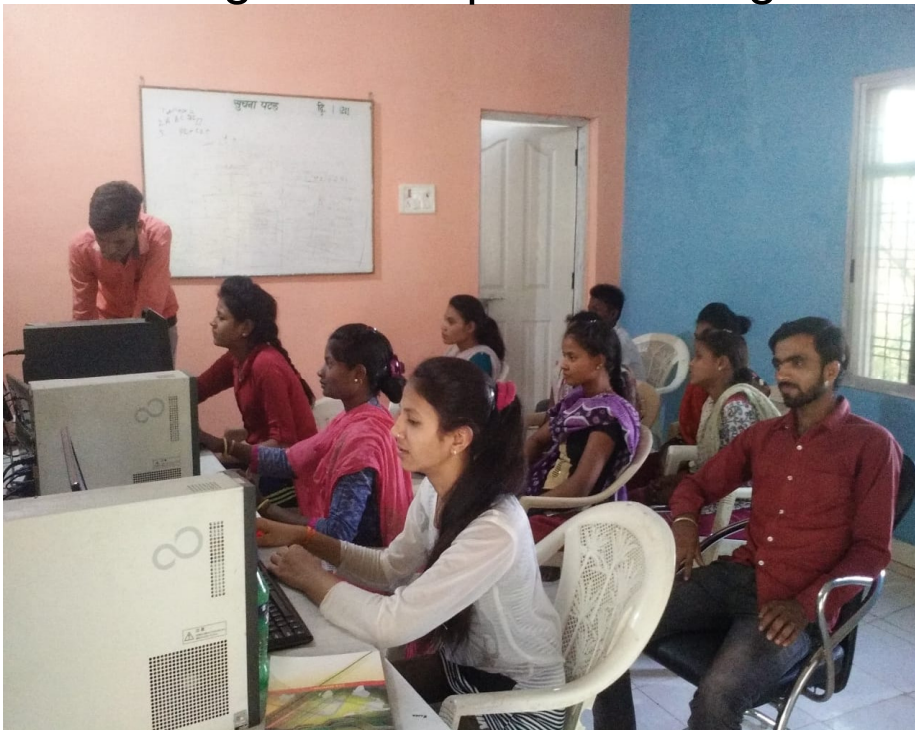
Skill development training for youth in Sendhwa division

- ❖ 90 unemployed youth were given different kinds of training such as of security guard, electrician and computer operator.



Skill development training for youth in South Seoni division

- ❖ The unemployed youth of South Seoni division were oriented about the mission.
- ❖ The youth were either 12th pass or graduates looking out for livelihood opportunity. 40 unemployed youth were given computer training.



A ray of hope for the women of South Balaghat division

- ❖ A 30 days training program was organised by Rural Self Employment Training Balaghat.
- ❖ 30 females were identified from Chirchira, Mohantola and Tekaditola



Women of South Panna take a different route for strengthening their livelihood

- In convergence with NRLM, Panna the women of Green India mission project areas were given training on soap making.



Deepening of lakes in Satna division helped the villagers find new source of water in the dry summer.

- The villagers of Uraichua, Berme and Jhakhaur were struggling for fetching drinking water from as far as 5 to 6 kms.
- The villagers in Berme village identified the source of water in the lake and deepened it, a spring of water filled the deepened portion of the lake.



Measures taken for resolving water scarcity in Muda villages of North Betul division results positively

- In March, 2018 the lake in Muda village of North Betul division was deepened
- This resulted in the increased water storage capacity and also helped in ground water recharge.



Water issue resolved in Hoshangabad

- The water resources in project area of Hoshangabad are high in iron.
- A borewell in the project area village is installed in convergence with Urja vikas nigam ltd.
- Nearly, 40 families are fetching safe drinking water from the newly installed borewell.



Community participation led to reduction of forest fire instances in Green India Mission project area of North Betul division

- The Green India Mission project area in Shahpur range of North Betul division is vulnerable to forest fire due to the hot summers in the region. Number of forest fire instances was registered in the area until last year.
- School children and youth were also involved in these training programs and a rally was organized for awareness drive in the villages.
- Wall paintings and group discussions were also a part of the awareness drive. Large number of villagers participated in these awareness drives.
- According to the FSI forest fire data, only 3 fire points were registered in this season due to the rapid actions taken by the villagers and front line staff.

Plantation details

- The total saplings demanded for plantation in GIM landscape is 25,67,971.
- The species selected are Teak, Awala, Mahua, Khamer, Munga, Sitafal, Arjun, Imli, Kachnar, Jamun, Neem, Bahera, Bel, Neem, Chirol, Prosopis, Pipal, Mango, Kathal, Amrud, Chirol, Shisham, Khair
- The compartments selected for plantation are 1114, 1111, 1110, 653,654, 659, 940, 1234, 1224, 1235, 874, 177, 178, 234,235, 236, 313, 338, 157, PF 72,75, RF 156, PF 468, 467, 464, 383, 384, 419, 420, PF 389, RF 131, PF 391, RF 400, etc.

GIM Shortfalls and Challenges

Financial:

- The budgetary allocations (10.5%) against the actual fiscal targets impacted results
- The FY 2018-19 budget allocation is about 0.5% of actually approved for the state
- Timely release of funds required to address delays of payments against works carried out by the Forest Divisions
- The shortage of funds delayed timely payments to villagers which otherwise addresses their distress situation in lean seasons/ curtail local migration
- Delay in release of payment to IIFM for research project delayed field implementations
- Raising the fund flow will incrementally address NDC Goal 5 achievements at State & National scenarios

GIM Shortfalls and Challenges

Programmatic:

- Convergence of possible line departments to address landscape issues
- Planning better livelihood initiatives for poor communities based on local resources (forest/non-forest), skill building etc.
- Explore better collaborations at district/block/village level to ensure good practices to empower local communities for livelihoods
- To institutionalize standard measurement of carbon so that Forest Divisions / Committees capacities are built to locally contribute to its documentation
- Better local collaborations through Component B initiatives to promote GIM
- To ensure better participation of local communities in forest management
- Documenting good practices in GIM landscapes for promoting replication of success stories
- Establishing standard Carbon Measurement techniques for common flow of reporting

PROPOSED APO FY 2019-20

s. N.	Submission/Intervention	Category	Type	Cost Norm (Rs./ha)	2019-20			
					Phy. (Ha)	Fin. (Lakh)		
A. Cost norms for Sub Missions and Intervention								
1	Sub Mission 1: Enhancing quality of forest cover and improving ecosystem services (4.9 m ha)	a) Moderately dense forest cover, but showing degradation		39,600				
Total					9,767.04	1,594.01		
		b) Eco-restoration of degraded open forests	Type A -with plenty of root stock		42,240	-	-	
Total					4,096.71	713.04		
			Type B- with limited root stock and open blanks		79,200	-	-	
Total					1,342.07	437.88		
	c) Restoration of grasslands	Type C- of largely open areas with sparse undergrowth		1,32,000	-	-		
Total					1,215.51	661.18		
	2	Sub Mission 2: f) Restoration of abandoned mining area		92,400	-	-		
Total					1,721.44	655.92		
	3	Sub Mission 3: a) Plantation in Urban & Peri-urban areas		2,64,000	-	-		
Total					44.63	48.41		
	4	Sub Mission 4: Agro-Forestry and Social Forestry (increasing biomass & creating carbon sink): 3 mha	a) Farmer's land including current fallows Farmer's land		52,800	-	-	
Total					4,076.35	886.76		
		b) Shelterbelt plantations			2,11,200	-	-	
Total					25.87	22.35		
	c) Highways/Rural roads/Canals/ Tank Bunds			1,84,800	-	-		
Total					-	-		
			III Year	9,240	0.00	0.00		
Total (A)					894.51	681.07		
5	Sub Mission 5: Restoration of Wetlands: 0.1 mha			1,58,400	-	-		
Total					27.08	17.52		
6	Promoting alternative fuel energy	Biogas, solar devices, LPG, Biomass-based systems, improved stoves	Per House Hold	3,300	2,750	91		
Total (A)					23,241.59	5,841.78		
B. For Support Activities								
Activities Cost								
1	Research (2% of A)					117		
2	Publicity/Media/outreach activities (1% of A)					58		
3	Monitoring and Evaluation (1% of A)					58		
4	Livelihood improvement activities, (17% of A)					993		
5	Strengthening local-level institutions (5 % A)					292		
6	Strengthening FDs (5% A)					292		
7	Mission Organisation, operation and maintenance, contingencies and overheads (4% A)					234		
Total (B)						2,044.62		
Grand Total (A+B)						7,886.40		

Forest Area Treatment



Pictorial Depictions of works being carried out

GREEN INDIA MISSION,
FOREST DIVISION-BARWANI, RANGE-PATI
SUB MISSION 1 (C) RESTORATION OF GRASSLANDS
COMPTT. NO.-102, N 22°1'3.50" E 74°43'0.05"



GREEN INDIA MISSION,
FOREST DIVISION-BARWANI, RANGE-PATI
SUB MISSION 1 (C) RESTORATION OF GRASSLANDS
COMPTT. NO.-269, N 21°49'50.9" E 74°41'24.02"



GREEN INDIA MISSION,
FOREST DIVISION-BARWANI, RANGE-PATI
SUB MISSION 1 (B) TYPE (C)
COMPTT. NO.-269, N 21°49'50.9" E 74°41'24.02"



GREEN INDIA MISSION,
FOREST DIVISION-BARWANI, RANGE-PATI
SUB MISSION 1 (C) RESTORATION OF GRASSLANDS
COMPTT. NO.-269, N 21°49'50.9" E 74°41'24.02"





Thanks

71 KALA BAI\कलाबाई F 61 SC
मोहन लाल\मल्लो 4 D1,--,D3,--,D5,D6,-- 3
Khatpura, Budhni, Sehore with Mahua Laddoo in
Palash Dona Pattal,

D1: Households with one or less room, kuccha walls and kuccha roof

D3: Female headed household with no adult male member between 16 and 59

D5: SC/ST Households

D6: Landless households deriving a major part of their income from manual labour